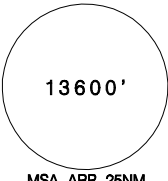
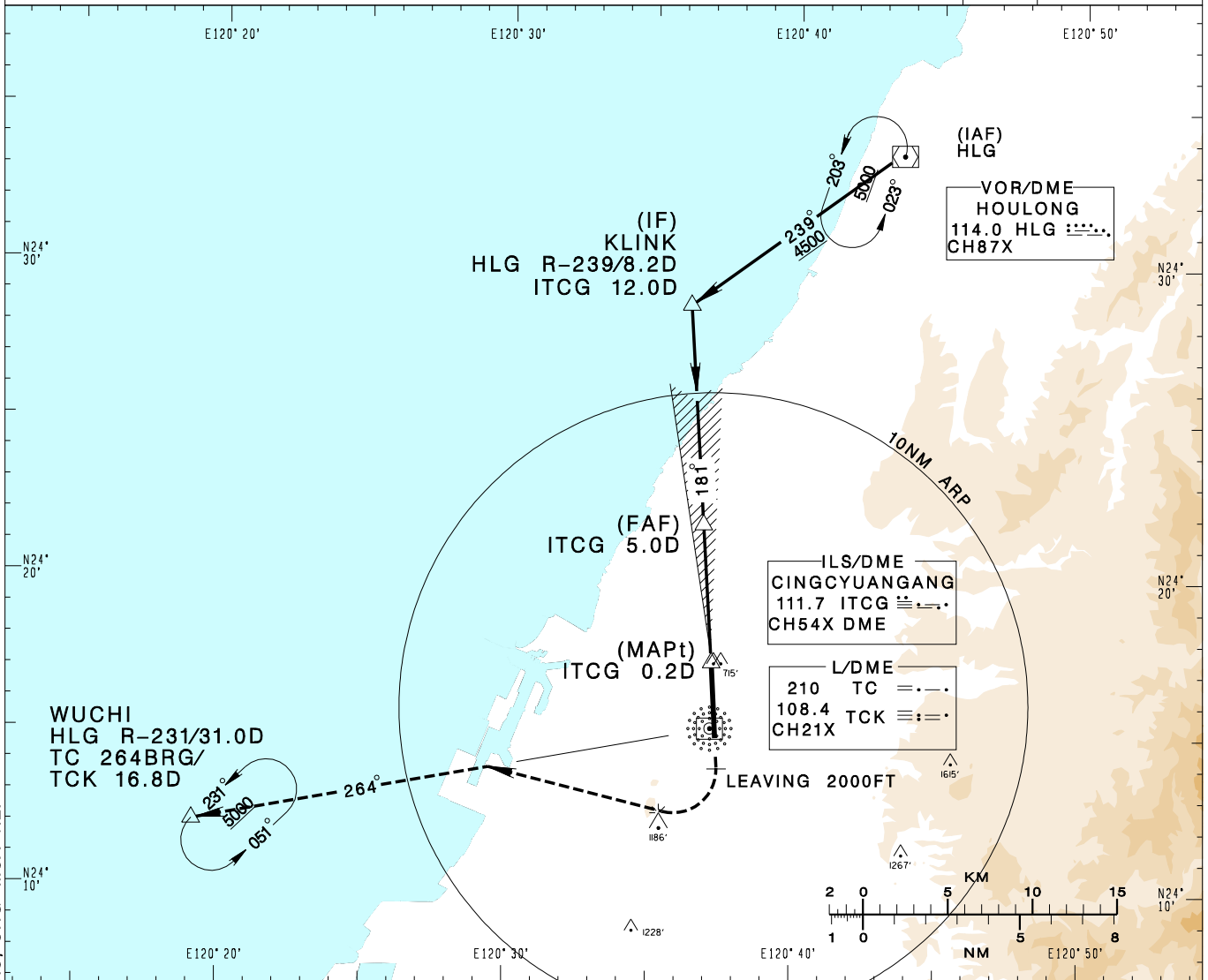


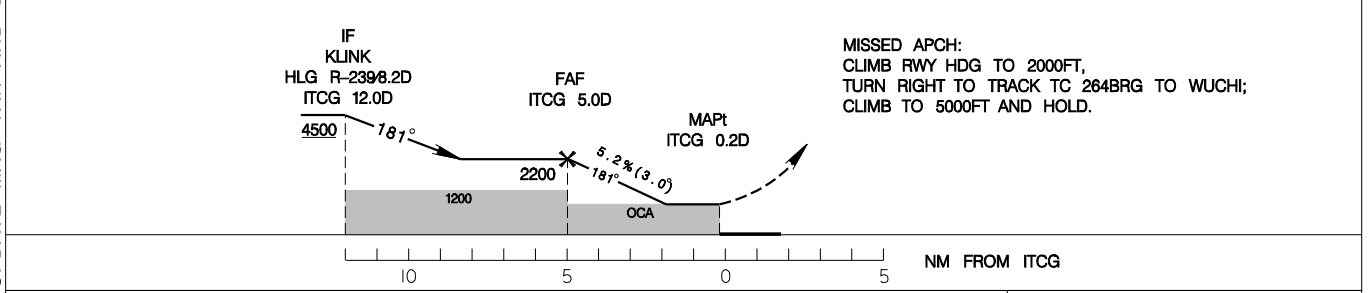
臺中/清泉崗機場
TAICHUNG/CINGCYUANGANG AD

RCMQ
LOC RWY18

TAIPEI APP 130.1 129.6	TAICHUNG TWR 118.75 120.25	ATIS 127.75	 <p>13600'</p> <p>MSA ARP 25NM</p>	
Apt Elev: 665'	Rwy18 THR Elev: 653'	Trans Level: FL130		Trans Alt: 11,000'
BEARINGS ARE MAGNETIC; DISTANCES ARE NAUTICAL MILES; ELEVATIONS, HEIGHTS IN FEET				



5DME	4DME	3DME	2DME	DIST to ITCG
2250	1930	1610	1290	ADVISORY ALT



MISSED APCH:
CLIMB RWY HDG TO 2000FT,
TURN RIGHT TO TRACK TC 264BRG TO WUCHI;
CLIMB TO 5000FT AND HOLD.

MINIMA (OCA IN FT, VIS IN M, OCH IN FT)				
CATEGORY	A	B	C	D
STRAIGHT IN	1060/1600 407	1060/1600 407	1060/1900 407	1060/1900 407
CIRCLING	1360/1900 695	1360/2800 695	1600/4400 935	1600/4800 935

NOTE
1. CIRCLING NOT AUTHORIZED EAST OF RWY.
2. TRAFFIC FROM WUCHI JOIN HLG HOLDING PATTERN FOR COURSE REVERSAL.
*DME REQUIRED.

CHANGES: MAPt DEF; UPDATE MAG VAR AND LEG CRS; CHG MSA REF